

DOUBLE TREE PLAT NO. 4, A P.U.D.

" A PLAT OF PHASE II A "

BEING A PARCEL OF LAND LYING IN
SECTIONS 1 AND 12, TOWNSHIP 39 SOUTH, RANGE 41 EAST,
MARTIN COUNTY, FLORIDA.
JULY 1994

CLERK'S RECORDING CERTIFICATE

I, MARSHA STILLER, CLERK OF THE CIRCUIT COURT OF MARTIN COUNTY, FLORIDA, HEREBY CERTIFY THAT THIS PLAT WAS FILED FOR RECORD IN

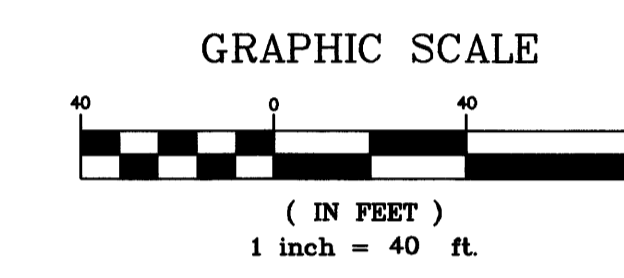
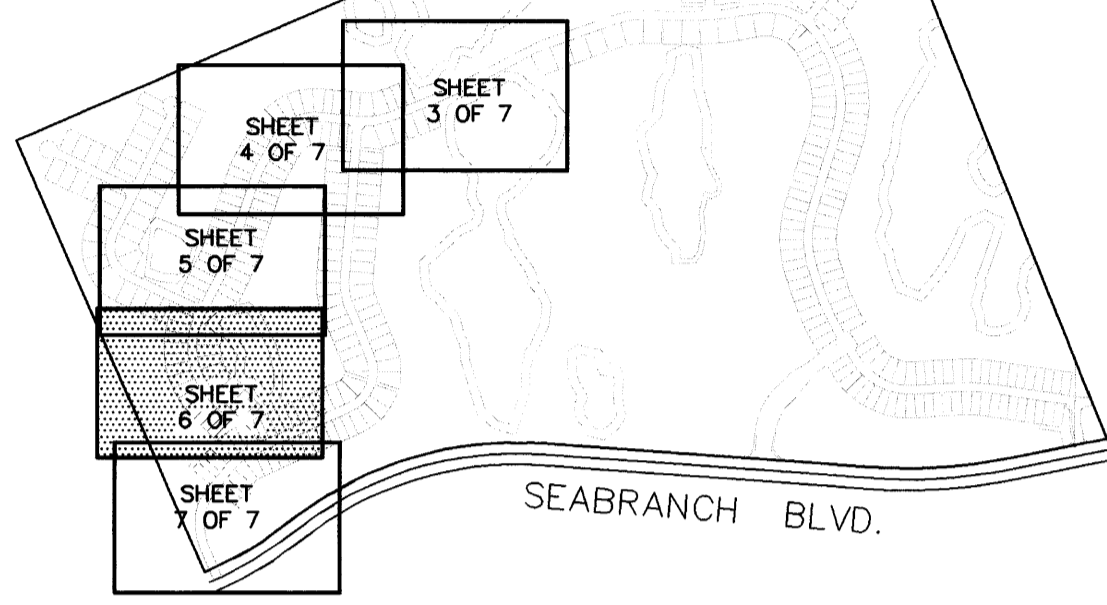
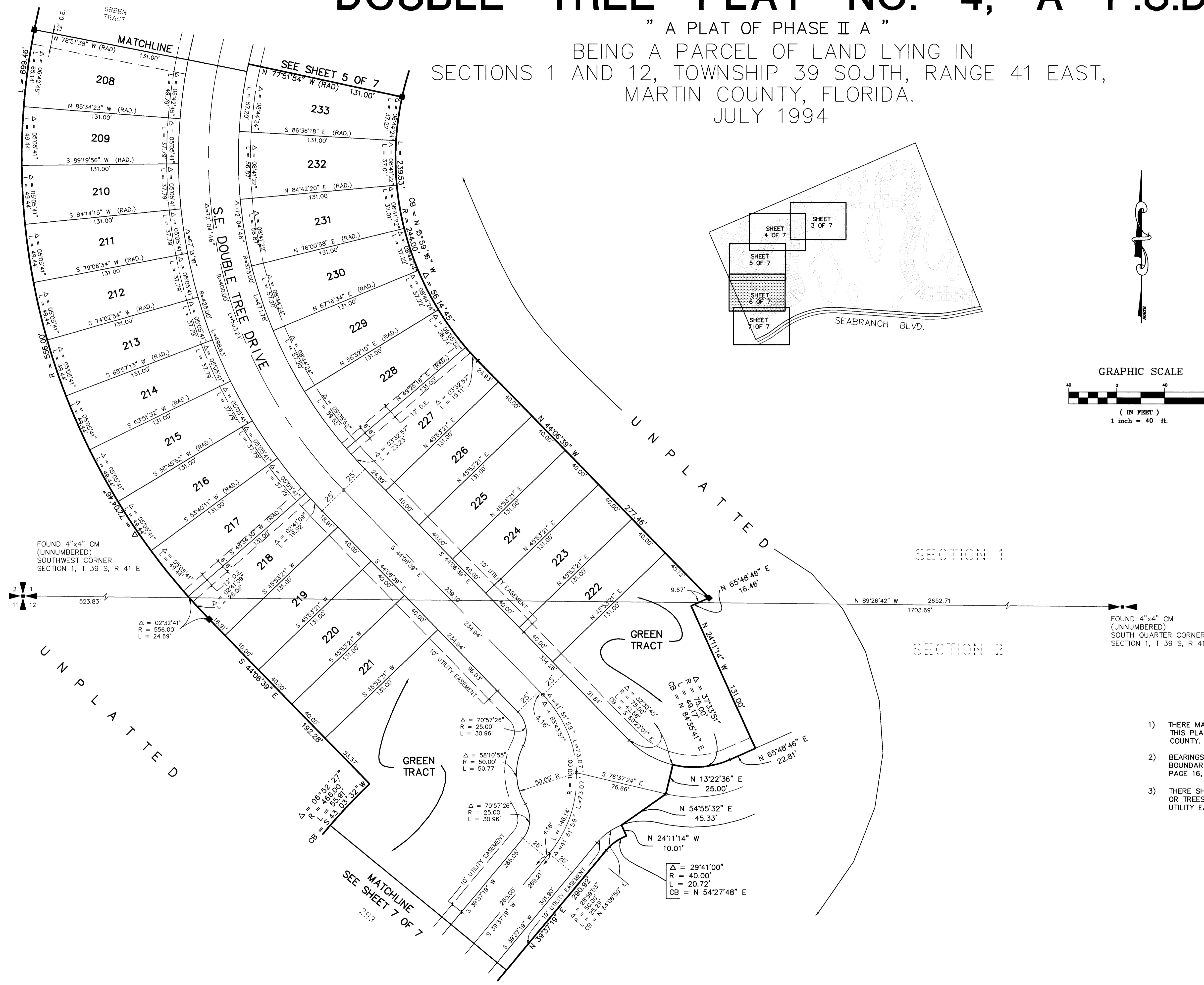
PLAT BOOK 13, PAGE 63,
MARTIN COUNTY, FLORIDA, PUBLIC RECORDS THIS

31 DAY OF August, 1994

MARSHA STILLER, CLERK OF THE CIRCUIT COURT
MARTIN COUNTY, FLORIDA.

FILE NUMBER 1079958 BY Donald Angles
DEPUTY CLERK

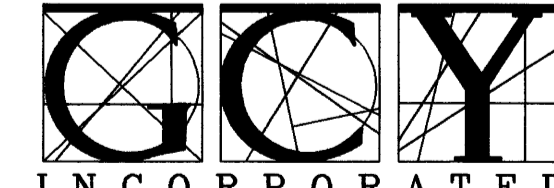
SUBDIVISION PARCEL CONTROL NO.



- #### LEGEND
- = SET PERMANENT CONTROL POINT (PCP)
P.K. & WASHER LABELED "LB 4108"
 - = FOUND PERMANENT REFERENCE MONUMENT
(PRM) 4X4 CONCRETE MONUMENT WITH
DISK LABELED "GCY INC. P.R.M. LB 4108,
RLS 4130"
 - U.E. = UTILITY EASEMENT
 - D.E. = DRAINAGE EASEMENT
 - M.E. = MAINTENANCE EASEMENT
 - = SET PERMANENT REFERENCE MONUMENT
(PRM) 4X4 CONCRETE MONUMENT WITH
DISK LABELED "GCY INC. P.R.M. LB 4108,
RLS 4130"
 - R = RADIUS
 - L = ARC LENGTH
 - Δ = DELTA
 - RAD. = RADIAL LINE
 - CB = CHORD BEARING
 - RLS = REGISTERED LAND SURVEYOR
 - LB = LICENSED BUSINESS
 - CM = CONCRETE MONUMENT

SURVEYOR'S NOTES

- 1) THERE MAY BE ADDITIONAL RESTRICTIONS THAT ARE NOT RECORDED ON THIS PLAT THAT MAY BE FOUND IN THE PUBLIC RECORDS OF THIS COUNTY.
- 2) BEARINGS SHOWN HEREON ARE REFERENCED TO THE NORTHWESTERLY BOUNDARY OF DOUBLE TREE PLAT NO. 1, A P.U.D. PLAT BOOK 13, PAGE 16, MARTIN COUNTY, FLORIDA, HAVING A BEARING OF N58°15'00"W
- 3) THERE SHALL BE NO BUILDINGS OR ANY OTHER KIND OF CONSTRUCTION OR TREES OR SHRUBS PLACED ON DRAINAGE EASEMENTS OR UTILITY EASEMENTS.



GCY
INCORPORATED

CIVIL ENGINEERS / LAND SURVEYORS

PALM CITY • 1505 S.W. MARTIN HWY. • 407 286-8083
FT. PIERCE • 4075 VIRGINIA AVE. 34982 • 407 466-9500